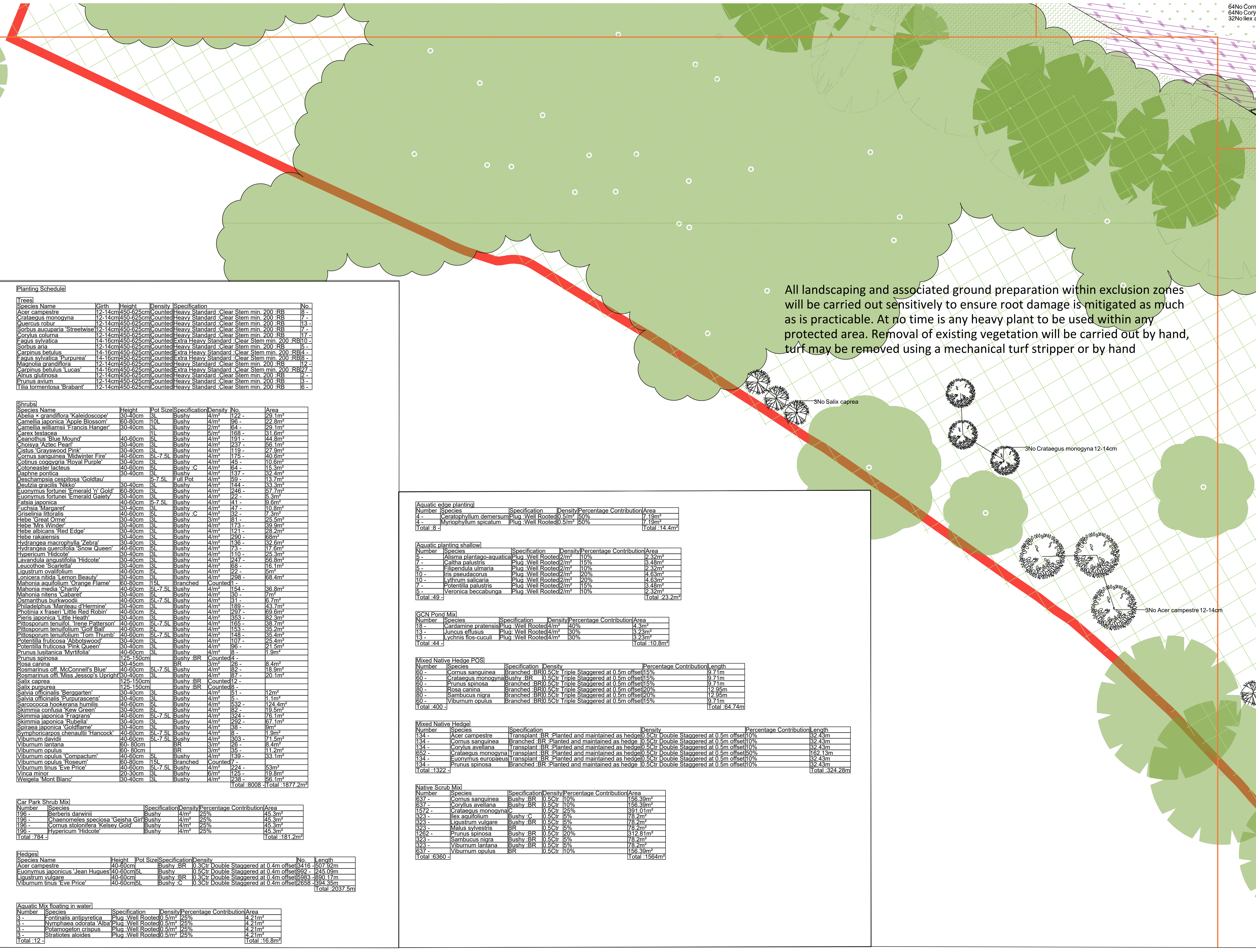
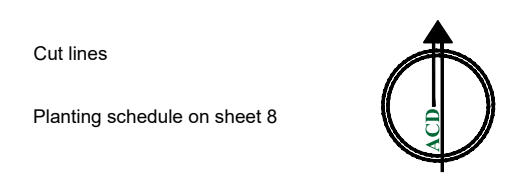


64No Cory
32No hex
SPECIFICATION
All works generally, to comply with the written Soft
Landscape Specification.

NOTES:
DO NOT SCALE FROM DRAWING
NOT FOR CONSTRUCTION, FOR PLANNING
PURPOSES ONLY

Legend

- Existing trees to be retained and protected during construction
- Proposed tree planting within soft landscape. See detail on sheet 1
- Proposed specimen shrub planting to receive short angular staking on half standards with expandable tree ties. Irrigation tubing to root system specimens as required
- Proposed hedge planting to be planted in a double staggered row 400mm apart and at 500mm centres in each row. To be maintained at 1m height
- Proposed mixed native hedge planting to be planted in a double staggered row 500mm apart and at 500mm centres in each row. To be maintained at 1.5m height adjacent to site boundaries
- Proposed shrub planting to receive 75mm bark mulch after planting operations
- Proposed native mix shrub planting to be planted in groups of 5-7no. of each species
- Proposed aquatic mix to be planted in groups of 5-7no. of each species
- Proposed grass areas to receive good quality amenity grass turves laid in line with good horticultural practices
- Proposed grassland areas, to be seeded with EM2 wildflower meadow grass seed mix as supplied by Emergate and sown at 4 grams per msq, or similar and approved
- Proposed mown path, to be maintained in line with amenity grass areas
- Proposed wet tolerant meadow, to be seeded with EM6 seed mix as supplied by Emergate Seeds and sown at 4 grams per msq, or similar and approved
- Proposed permanently wet area within the pond
- Proposed tussocky grass, to be seeded with EM10 seed mix as supplied by Emergate. Seeds and sown at 4 grams per msq, or similar and approved
- Proposed grass area, to be seeded with EFL1 Flowering lawn meadow mixture as supplied by Emergate Seeds and sown at 4 grams per msq, or similar and approved
- Existing ground to be left undisturbed, where disturbed seed with shade tolerant hedgerow mix E11 supplied by Emergate and sown at 4 grams per msq, or similar
- Existing ground to be left undisturbed
- Proposed bulb mix
- Cut lines



All landscaping and associated ground preparation within exclusion zones will be carried out sensitively to ensure root damage is mitigated as much as is practicable. At no time is any heavy plant to be used within any protected area. Removal of existing vegetation will be carried out by hand, turf may be removed using a mechanical turf stripper or by hand

Planting Schedule

Table with 6 columns: Species Name, Girth, Height, Density, Specification, No. Lists various tree species like Acer campestre, Crataegus monogyna, Quercus robur, etc.

Shrubs table with 6 columns: Species Name, Height, Pot Size, Specification, Density, No. Area. Lists shrubs like Abelia x grandiflora 'Kaleidoscope', Camellia japonica 'Apple Blossom', etc.

Aquatic edge planting table with 6 columns: Number, Species, Specification, Density, Percentage Contribution, Area. Lists species like Ceratophyllum demersum, Myricophyllum spicatum.

Aquatic planting shallow table with 6 columns: Number, Species, Specification, Density, Percentage Contribution, Area. Lists species like Alisma plantago-aquatica, Galitha palustris, Filipendula ulmaria, etc.

GCN Pond Mix table with 6 columns: Number, Species, Specification, Density, Percentage Contribution, Area. Lists species like Juncus effusus, Lychinis flos-cuculi.

Mixed Native Hedge POS table with 6 columns: Number, Species, Specification, Density, Percentage Contribution, Length. Lists species like Cornus sanguinea, Crataegus monogyna, Rosa canina, etc.

Mixed Native Hedge table with 6 columns: Number, Species, Specification, Density, Percentage Contribution, Length. Lists species like Acer campestre, Cornus sanguinea, Cornus avellana, etc.

Native Scrub Mix table with 6 columns: Number, Species, Specification, Density, Percentage Contribution, Area. Lists species like Cornus sanguinea, Cornus avellana, Crataegus monogyna, etc.

Car Park Shrub Mix table with 6 columns: Number, Species, Specification, Density, Percentage Contribution, Area. Lists species like Berberis darwinii, Chaenomeles speciosa 'Geisha Girl', etc.

Hedges table with 6 columns: Species Name, Height, Pot Size, Specification, Density, No. Length. Lists species like Acer campestre, Euonymus japonicus 'Jean Hughes', Ligustrum vulgare, etc.

Aquatic Mix floating in water table with 6 columns: Number, Species, Specification, Density, Percentage Contribution, Area. Lists species like Fontinalis antipyretica, Nymphaea odorata 'Alba', etc.

Revision table with 5 columns: Rev, Date, Details, Drawn, Laid Out. Shows revisions to layout and pond details.



HEAD OFFICE
Rodbourne Rail Business Centre, Grange Lane,
Malmesbury, SN16 0ES
Tel: 01666 825646

Persimmon Homes

scheme: Oakcroft Lane
Stubington
client: Persimmon Homes
drawing: Landscape Proposals
date: April 2020
scale: 1:200@A1
drawing no: PERSC22805 11 Sheet 8
drawn: JM checked: DKM

Copyright of ACD Environmental Ltd. All rights described in Chapter 11 of the Copyright, Designs and Patents Act 1988 have been generally asserted. 2011. Copyright of this plan remains with ACD until all fees have been paid in full.